

AiDANT Social Distance Specifications



1. Overview

The AiDANT Social Distance application developed by AiDANT.ai is an AXIS ACAP application that can be used to monitor an area and help enforce social distancing by notifying the user if any break in social distance is detected. This application can be installed into any non-fisheye AXIS camera with an ARTPEC-7 chip.

2. Requirements

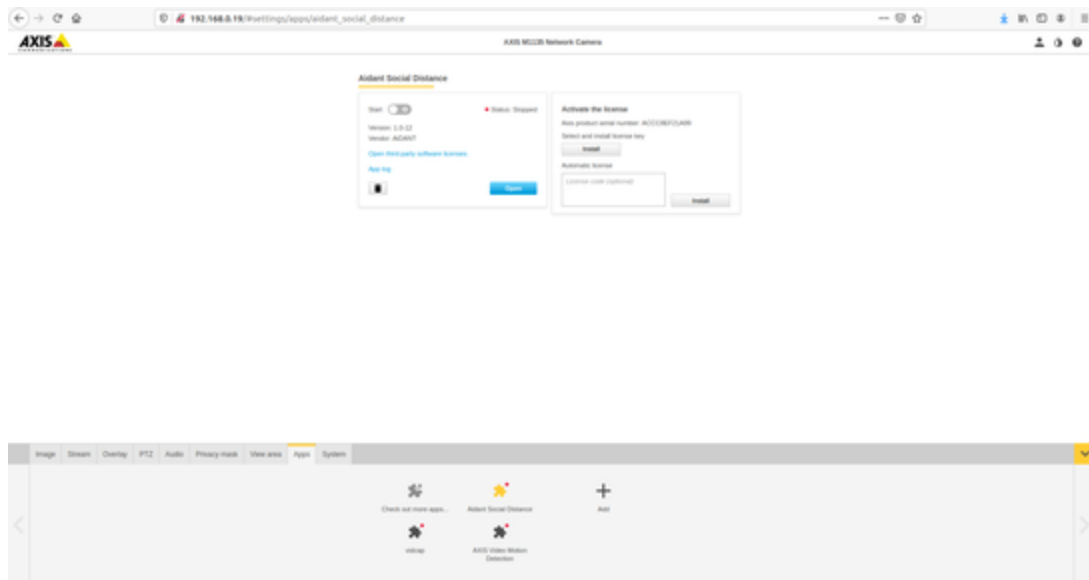
In order to run the AiDANT Social Distance application, you will need:

1. An AXIS camera with an ARTPEC-7 chip and a non-fisheye lens.
2. Update the AXIS camera firmware to the latest version.
3. Purchase a license from AiDANT.
4. Download and extract (unzip) the eap application file through the link <https://downloads.aidant.online/>.

3. Installation

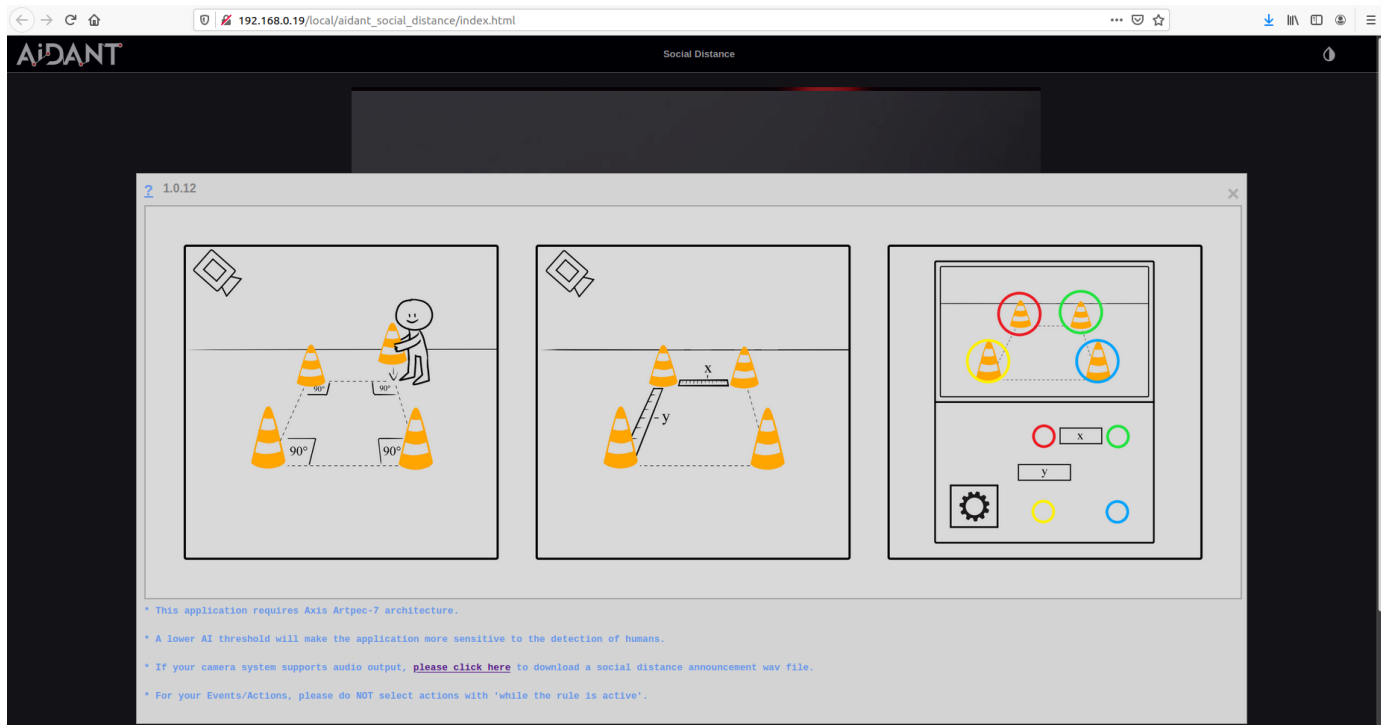
Once all the requirements are satisfied, please do the following:

1. Access the camera through any web browser.
2. Go to *Settings->Apps* .
3. Click on *Add* and install the .eap application file.
4. Click on *Aidant Social Distance* and install the license key file provided to you.
5. Click on the *Open* button. If you see an error that indicates no valid license key installed, please wait for about a 30 seconds for the application to register the license if it was installed properly. Once the application has registered the license key, you may now use the application.

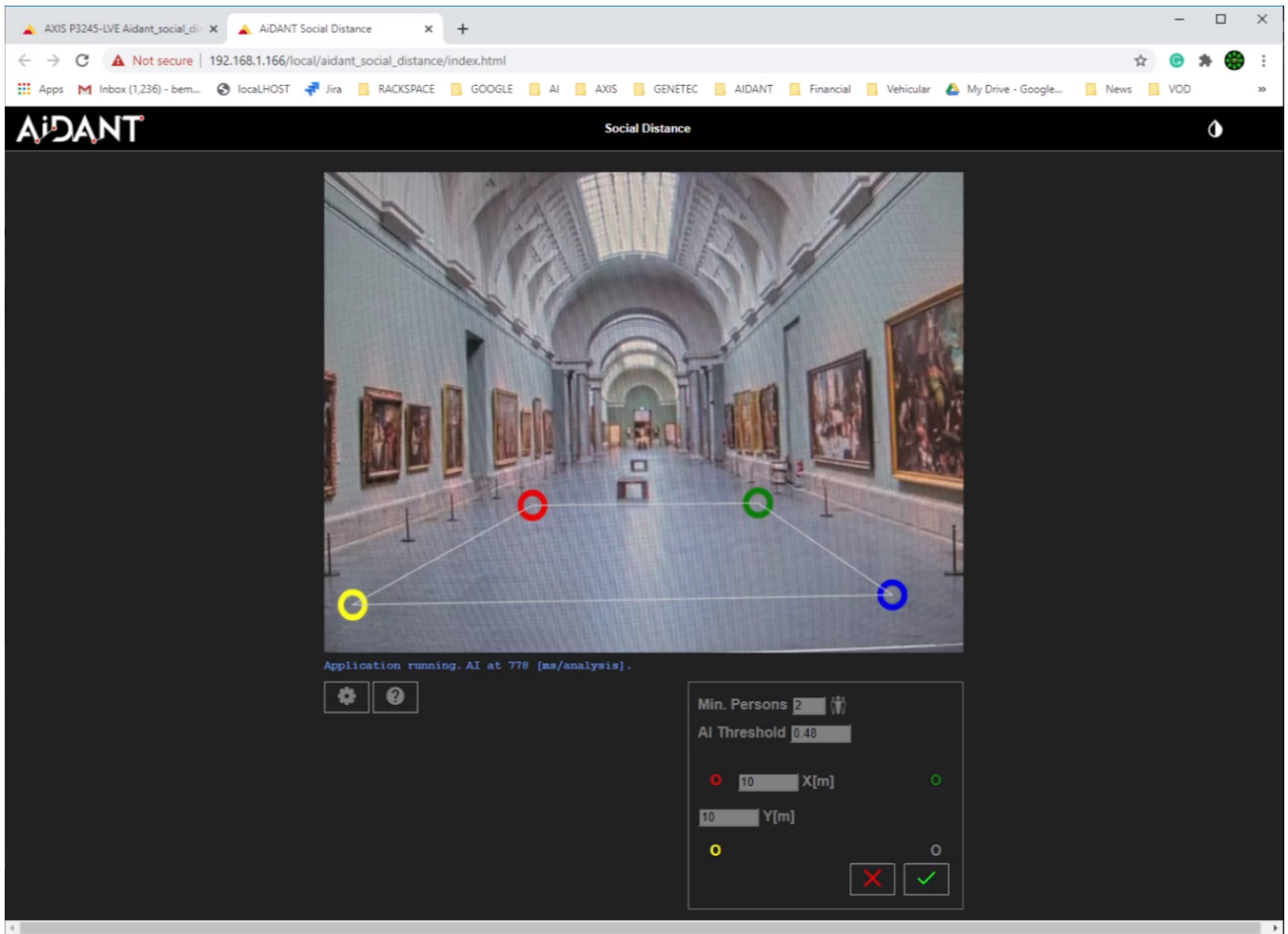


4. Calibration

For the application to work well, you must calibrate the application correctly. Click on the question mark button to open the help pop-up that explains the calibration process.



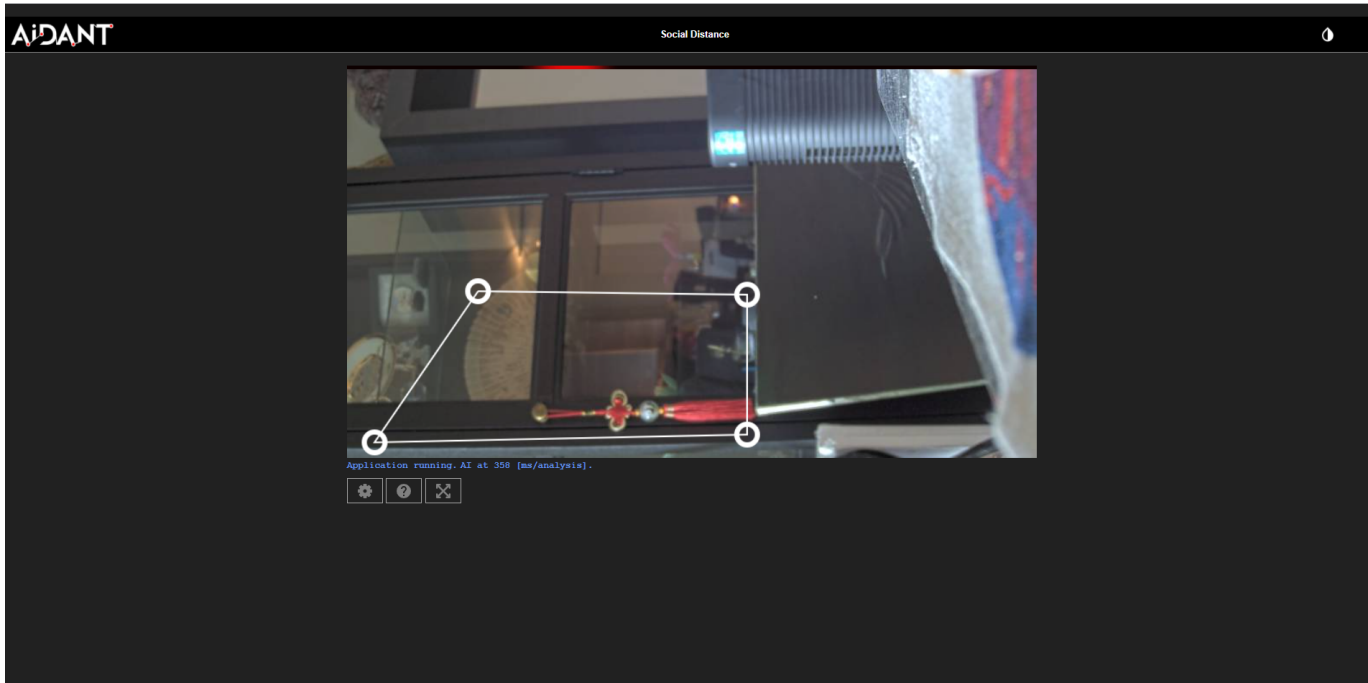
In order to successfully calibrate the application, first place the camera in the area you want to monitor. Then, create a rectangle on the ground in your monitoring area using four markers and record your width and height measurements. Once done, click on the gear button.



From there, use the user interface to indicate where your markers are and what measurements you have taken. Additionally, you can also use the *Min. Persons* field to indicate what the minimum number of persons in a group you need to trigger the social distance breach alarm.

The *AI Threshold* field can also be modified to indicate how selective you want to be in identifying a human (i.e. the higher the number, the more discriminate it becomes to determine if an object on the screen is human and the less true positives and false positives that you will have). A value of 0.40 is the default as it minimizes false positives and increases true positives for human detection.

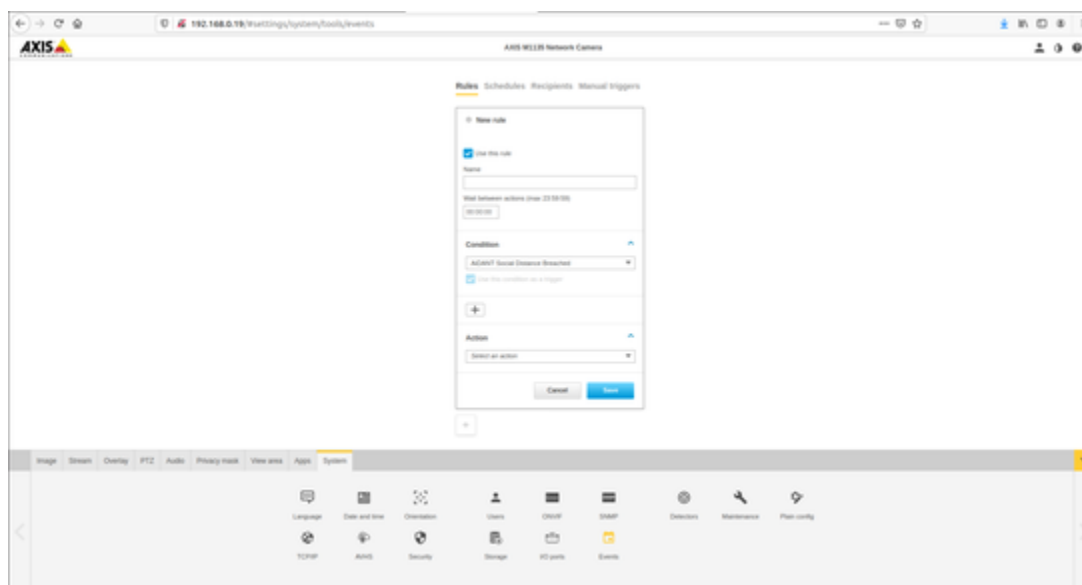
As of version 1.1.4, the area of interest module has been integrated into the application. This will allow you to monitor social distance in an area of your choice using the 4 sided polygon interface in the application web page. To select an area of interest that you want the social distance app to monitor, go the camera page and click and drag the four white points. The application will automatically update once you have used the four points to highlight the area you want to monitor.



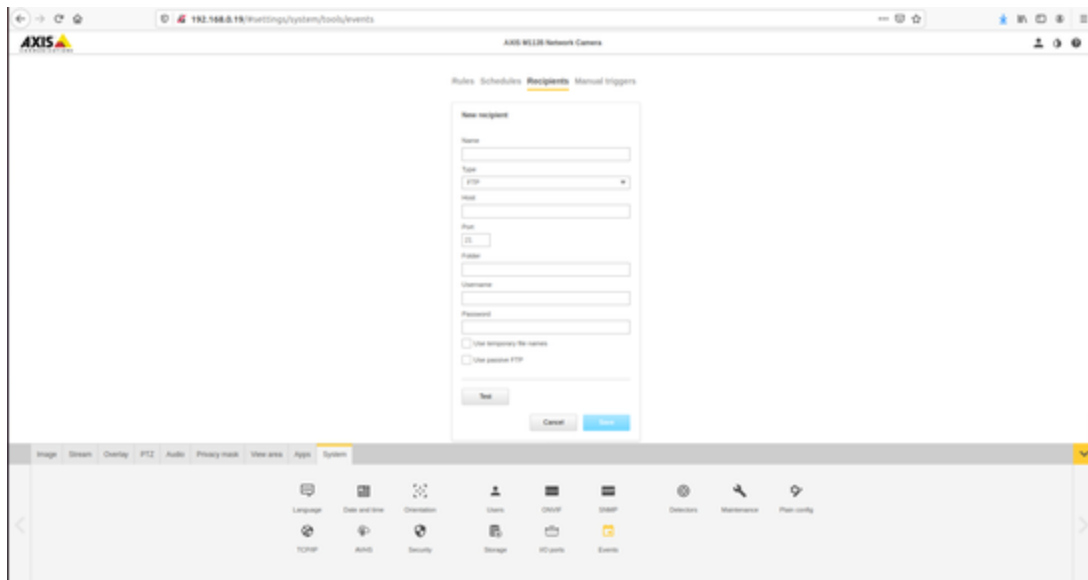
5. Event Triggering

To setup event triggering:

1. Go to *System->Events*.
2. Click on + under *Rules* and select *AiDANT Social Distance Breached* under the *Condition* field.
3. Fill in the *Name* field and select an *Action*.



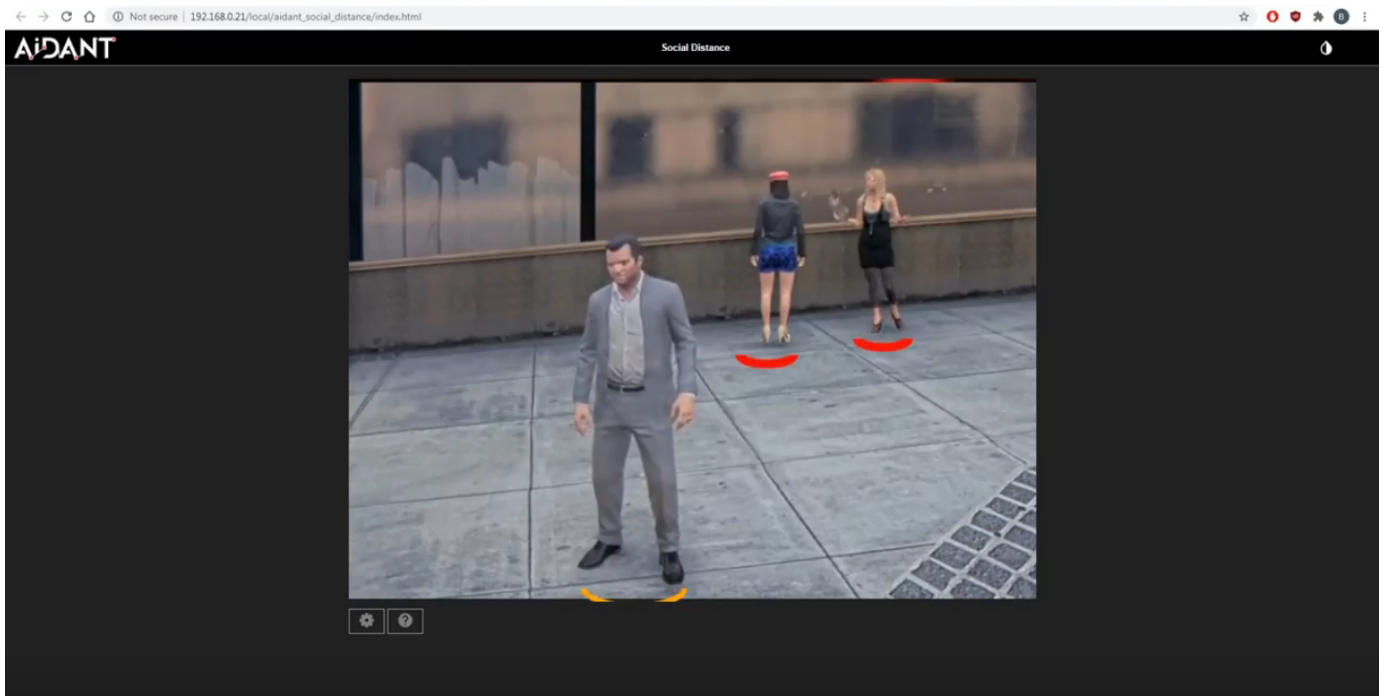
If you wish to set up email notification, click on the *Recipients* tab. Press the + button and fill in the fields.



Once done, you can go back to *Actions* under the *Rules* tab and select the appropriate action you want that requires a recipient.

6. Usage

Once you have everything setup, you can now use the application to monitor an area and notify you of social distance breaches. When a human is detected, a marker near their feet will be shown on the stream in the Social Distance application. The default colour for the markers is yellow. A breach is indicated when at least two detected humans appear to less than 2 metres apart. Their markers will change from yellow to red when this occurs.



When the breach has lasted more than 5 seconds and the number of persons breaching social distance is greater than the minimum number of persons, then a notification will be sent.

Copyright Aidant.ai 2020: This application and documentation, including any attachments, is for the sole use of the intended client. Any unauthorized use or distribution is prohibited. Please contact info@aidant.ai for additional information.